



## Security Catalog #6 October 2017

Installers and Users appreciate our unique range of proven applications. Developed for eliminating Vibration (Seismic) Activity or Vibration that effects the Picture Quality for any type of Bullet, Dome, PTZ or Pendant Camera.



With our Range of Anti-Vibration Industrial Strength Products designed specifically to cure the most difficult situations where Vibration is a problem



- Road Bridges
- Railroads
- Ports
- Plant Buildings
- Industrial Sites
- Construction Sites
- Shipping and Cruise Ships



**Military Grade Components Guarantees an Installer will Benefit from the Superior Quality of our USA made Products**

Designed by

A blue handwritten signature that reads 'Nigel B.' with a stylized flourish at the end.



**MADE IN THE USA**

**Designed and Manufactured in the USA by:**

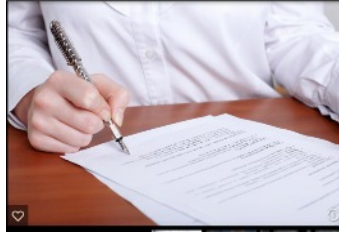
**NIGEL B DESIGN, INC. 4163 ST CLAIR AVE, STUDIO CITY, CA 91604**

**TEL: (818) 487-9323 \* FAX: (818) 766-9805**

**E-MAIL: [securitysales@nigelbdesign.com](mailto:securitysales@nigelbdesign.com)**

**WEB SITE: [www.nigelbdesign.com](http://www.nigelbdesign.com)**

## **NIGEL B DESIGN'S PRODUCTS ARE TAA COMPLIANT**



### **WHAT IS TAA COMPLIANT**

TAA refers to the Trade Agreements Act (19 USC & 2501-2581) which is intended to foster fair and open International Trade. TAA requires that the US Government may only acquire US Made or designated Country End Products. This Act requires that Contractors must Certify that each End Product meets the applicable Requirements.

End Products are those Articles, Materials and Supplies to be acquired for Public use.\*This includes items that have been "Substantially Transformed" in the United States.

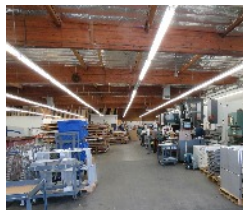
As all Nigel B Design Products are Manufactured and Assembled in the USA they are eligible to be added to any Contractor's GSA Listing

**All Nigel B Design Products shown in this Catalog are fully  
TAA Compliant under the Buy American Act**



I wish to thank the many Industry Veterans who has helped me in producing the many unique Solutions shown in this Catalog. As Craig Dalman who used to be at Pelco (Schneider Electric) said "I believe that you have solved some interesting problems for the Security Industry."

**All Nigel B Products are made under my Direct Supervision in the most up to date factory using the latest manufacturing techniques resulting in the highest quality, backed by a second to none "No Quibble" guarantee**



## SOME RECENT ANTI-VIBRATION CAMERA ADAPTOR INSTALLATIONS

**CLIENT: TDOT TRAFFIC OPERATIONS DIVISION, NASHVILLE, TN**

INSTALLATION ADDRESS: Road Bridge Memphis, TN

CONTRACTOR: Kapsch Traffic Com North America

PROBLEM: This Particular Road bridge suffered from excessive number of 18 Wheelers rumbling across the main Memphis Roadway causing excessive Vibration. Using our NB- HDSA Anti-Vibration Adaptor, a test Unit was added to one of the Cameras already installed, resulting in the elimination of Vibration. In view of the satisfactory Test Results a total of six NB-HDAV Anti-Vibration Devices were added to the existing six Cameras.



**Heavy Duty Anti Vibration Adaptor**

**UNION PACIFIC RAILROAD**

DEALER: SHEL-BAR ELECTRONIC INDUSTRIES, AIRDRIE, CANADA

CLIENT CONTRACTOR: UNION PACIFIC RAILROAD

INSTALLATION ADDRESS: Chicago, IL

PROBLEM: Excessive Vibration from Freight Trains

CAMERAS USED: Bosch FlexiDome Starlight 4000VR and FLIR FC Series ID Camera With the NIGEL B HEAVY DUTY ANTI-VIBRATION CAMERA ADAPTOR, NB-MDAVCA, and NB-BCMCP-Bosch Mounting Plate for FlexiDome Starlight 4000VR, and FLIR Series Mounting Plate NB-FLFCMP



**Bosch Autodome 400/ Flir Anti- Vibration Camera Adaptor**



**Heavy Duty Anti Vibration Adaptor**



**FLIR FC Series ID Camera Mounting Plate**



**Bosch FlexiDome Starlight 4000 VR**

**COMMENT FROM THE INSTALLATION ENGINEER:**

Hi Nigel it's Johnny from Union Pacific, I want to say thank you for your Camera Mounts. They worked perfectly on my Project. I had to put up two Bosch Cameras and two FLIR Cameras on a Bridge over six Railroad tracks. The Mounts were easy to put up, also, the Cameras mounted to them perfectly. I couldn't be happier on how the project turned out.

**CURRENT DESIGN WORK**

**BOSCH SECURITY CAMERA DIVISION**

**Anti-Vibration Mount for Bosch MIC Camera**

REQUESTED BY: Christopher Johnston, Regional Marketing Manager Including our New Mounting Method for the Bosch MIC Cameras that allows Mounting to any Vertical Surface, Pole or Unistrut



**NB-MIC Bosch MIC Series Flat Surface Pole/Unistrut Mount**



**Bosch MIC Camera For Vertical Mounting**

**UNION PACIFIC RAILROAD**

**Anti-Vibration Mount for the Bosch Autodome 7000 HD IP PTZ Camera**

REQUESTED BY: Ryan Song, Project Engineer, Union Pacific Railroad This replaces the Standard Box and is Attached directly to the Autodome's Arm allowing the complete assembly to be mounted directly to a Flat Surface Pole or Unistrut



**Bosch AutoDome 7000 Arm Mounted to the Anti-Vibration Box**



**AutoDome 7000 HD Surface /Pole Unistrut Version**

**PELCO - SCHNEIDER ELECTRIC**

**Anti-Vibration Platform Configuration for the Espirit Camera for Railroad Applications**

REQUESTED BY: David Marin



**Pelco Espirit Camera Wall Mount**



**Pelco Espirit Platform Flat Surface Pole /Unistrut Mount**

**PROJECT FOR LAX AIRPORT**

Nigel B Design has been recommended by Sony Security Systems after a successful Test Installation at the George Washington Bridge. Over 60 Cameras are displaying Vibration at LAX Airport and the Camera Mounting has to be changed. Many are either Pole or Surface Mounted or installed on the Corner of Hangers using Sony Security Cameras.



**Surface Mount**



**Corner Wall Wall Bracket**



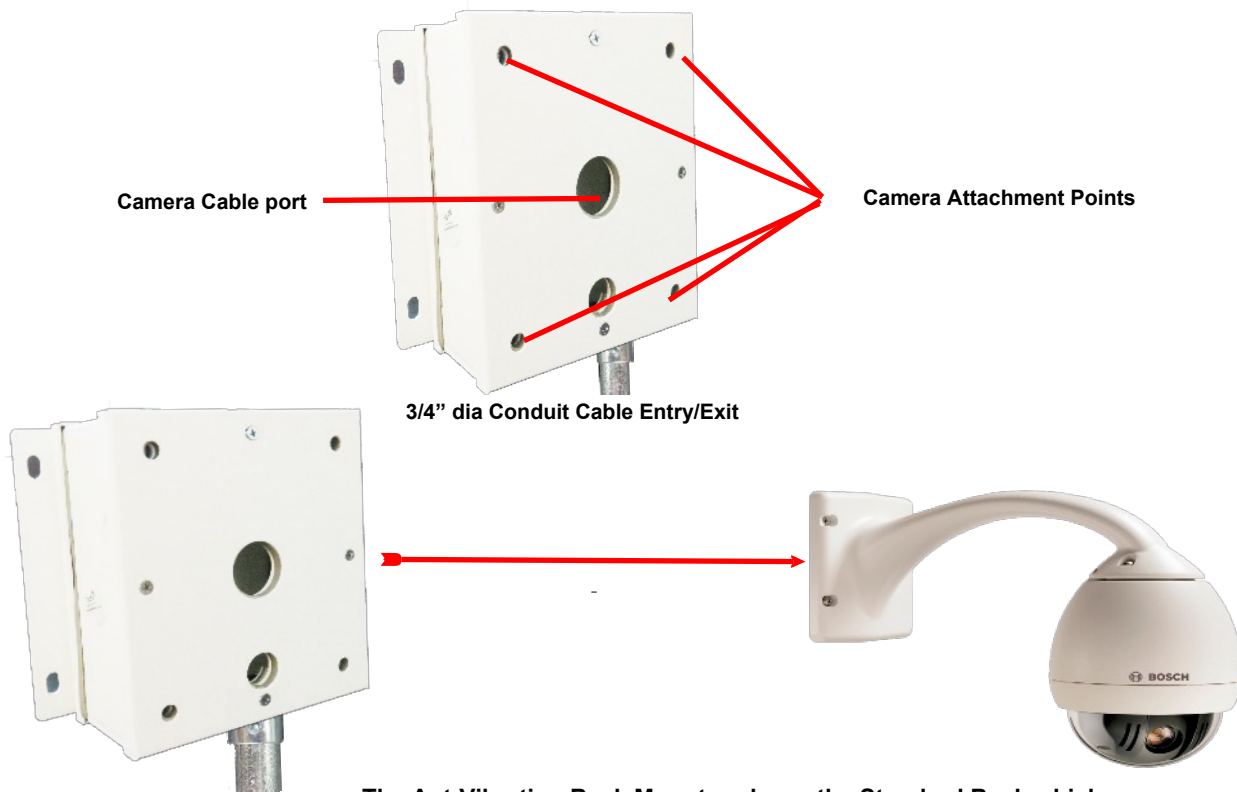
**Sony Camera**

**Other Design work in Progress, please inquire**

[nigel@nigelbdesign.com](mailto:nigel@nigelbdesign.com)

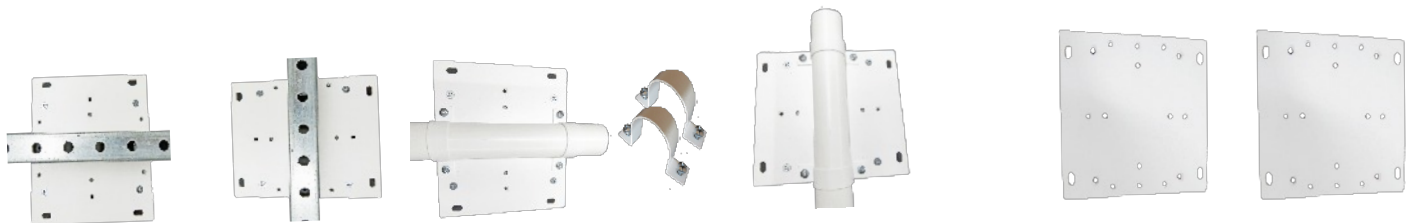
## **ANTI-VIBRATION ADAPTOR FOR THE BOSCH® AUTODOME 7000 CAMERA**

**THE ANTI-VIBRATION ADAPTOR INCLUDES THE BACK MOUNTING PLATE  
WHICH REPLACES THE STANDARD AUTODOME 7000 REAR BOX**



**The Ant-Vibration Back Mount replaces the Standard Back which is then attached to the Bosch 7000 Camera Arm and Camera using the supplied Camera Arm's (4) 8 mm Screws**

### **THERE ARE THREE DIFFERENT WAYS TO MOUNT THE ANTI-VIBRATION'S BACK MOUNTING PLATE**



**Unistrut attached to a Back Plate 1 1/2" dia. Pole attached to a Back Plate using 1 pr Pole Clips    Back Plate Attached to a Flat Surface**

The Included Back Plate can also be revolved 90° allowing attachment to either Unistrut or Pole to be changed to suit the Installation  
\* 1 1/2" dia Pipe and Unistrut are Customer Supplied Parts

**WEIGHT: 5.7 lbs. SHIPPING WEIGHT: 9 lbs DIMENSIONS: 9" x 9" x 9"**

## ANTI-VIBRATION MOUNT FOR BOSCH MIC SERIES CAMERAS

Attaches directly to the Base of the MIC Camera providing Protection from Vibration in extreme Situations such as that experienced in Railroad and Traffic Road Bridges

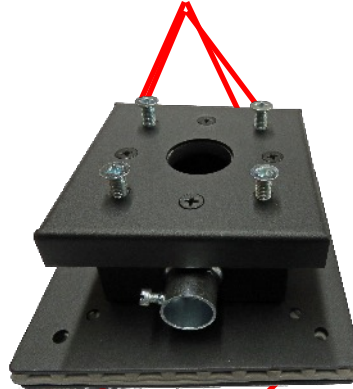
There are a total of 3 different ways the MIC Camera can be installed:

1. MOUNTING PLATE allows Mounting the Camera to any Flat Surface.
2. POLE MOUNTING Using Standard 1½" Dia. Pipe Vertically or Horizontally
3. UNISTRUT Vertically or Horizontally



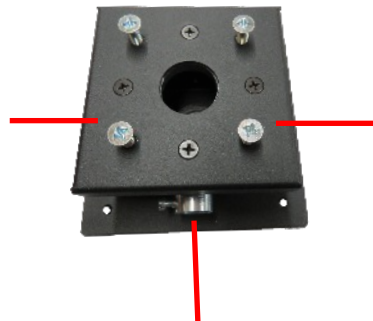
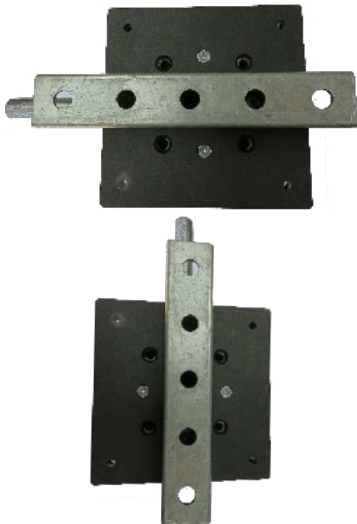
Mounts are available in both BLACK and WHITE Powder Coat Scratch Resistant Enamel

(4) 8 mm Screw Holes are provided allowing the Camera to attach directly to the Anti-Vibration Mount

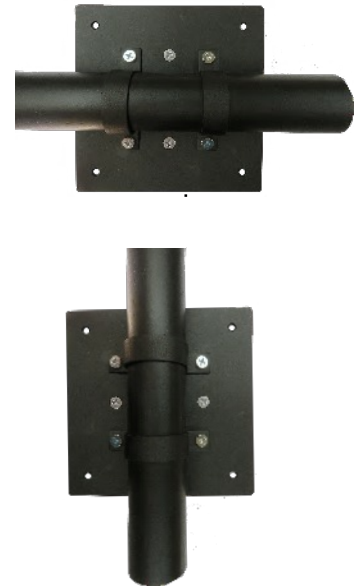


All Signal and Power to and from the Camera runs inside the Metal Conduit  
A total of 3 positions can be used for Entry and Exits points which are 90° Apart

4 Screw Positions at each corner are provided on the Rear Plate for Mounting on to any Flat Surface



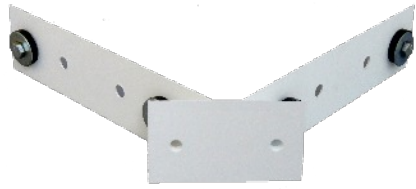
A total of (3) ¾" dia. Entry and Exit Points are provided. The unused ones are supplied with Blanking Caps when not used.



Underside View of the Mounting Plate showing how the Pole or Unistrut Position can be changed at will allowing the Anti-Vibration Bracket to be positioned either Horizontally or Vertically

# BOSCH® ANTI-VIBRATION L ADAPTOR

- Can be used either Upright or Upside Down
- 5 Different Camera Mounting Options
- Maintains the Vertical Camera Requirement

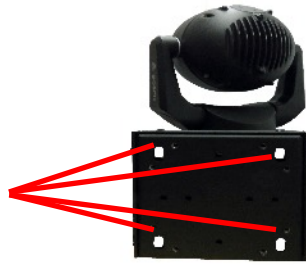


Anti-Vibration Corner Wall Bracket



## The Anti-Vibration Corner Wall Bracket allows Mounting the the corner of a Building

The Weather Proof Back Plate has Four Slotted Mounting Holes providing a convenient method of attachment to any Vertical Surface



Four Different 3/4" dia. Cable Ports are provided. Unused Ports use 3/4" Blanking Caps to maintain the Weather-proof Design



## THE BOSCH L ADAPTOR SHOWN BELOW DEMONSTRATES THE VARIOUS CAMERA POSITIONS



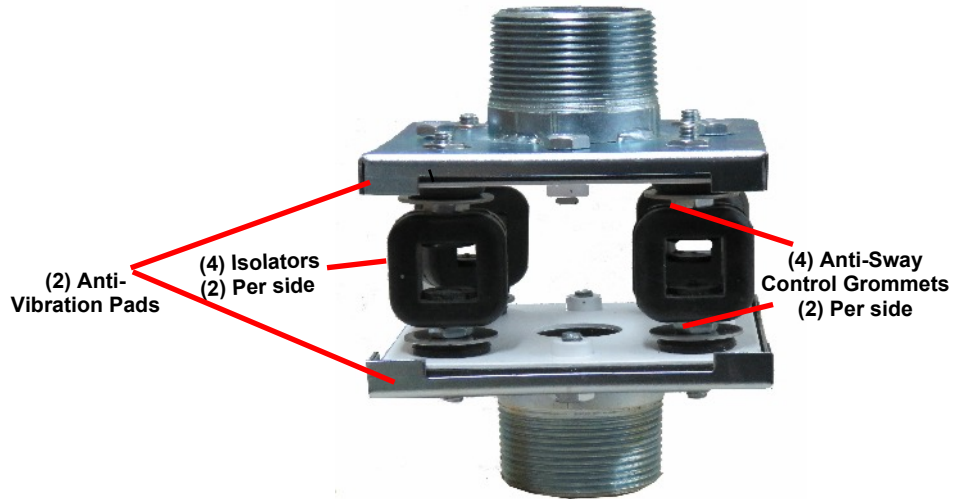
The Pole Mount Brackets can be installed Horizontally or Vertically allowing the Pole to be used in either direction

Unistrut can be installed Horizontally or Vertically allowing it to be used in either direction

**THE HEAVY DUTY ANTI-VIBRATION ADAPTOR FOR USE WITH ANY CAMERA**



**Heavy Duty Anti-Vibration Adaptor with Cover**



**Heavy Duty Anti-Vibration Adaptor with Cover removed showing the various Components**



The Left Picture shows (1) Anti-Vibration I Beam/Girder Bracket (1) Customer Supplied 1½" dia Pole (1) Female to Female Coupler (1) Heavy Duty Anti-Vibration Adaptor Part # NB-HDSA, Customer Supplied Camera



The Right Picture is using the I Beam/Girder Mount Part # NB-EXP81B, Customer Supplied 1½" dia. Pole, (1) 1½" Female-Female 2" long Converter Part # NB-2064, (1) Heavy Duty Anti-Vibration Adaptor Part # NB-HDSA, Customer Supplied Camera

**BENEFIT FROM OUR EXCLUSIVELY DESIGNED ANTI-VIBRATION CAMERA MOUNTING SYSTEM WITH ITS MULTIPLE METHODS OF INSTALLATION**



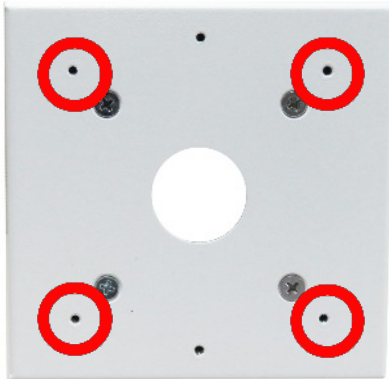
**Anti-Vibration Mounting Box shown with included Anti-Vibration Back Plate**

**MOUNTING OPTIONS**  
**Using the Anti-Vibration Back Plate allows**

- Mounting any Camera to any Flat Surface
- Mounting any Camera to a Pole
- Mounting any Camera to any I Beam or Girder
- Vertical Unistrut Mounting
- Horizontal Unistrut Mounting



**I Beam/Girder Bracket**



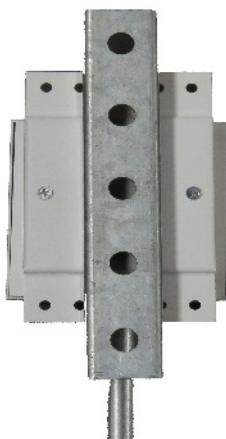
**Typical Anti-Vibration Camera Plate Showing Captive Nuts**



**Red Circles represent 6.32 Captive Nuts for Attaching the Camera To the Camera Plate**



**Camera Arm attached on a pole**



**Mounting Box shown with Anti-Vibration Back Plate attached to Unistrut**



**Camera Arm attached to Vertical Unistrut**



**Security Camera Mounted on a Pole above the Ceiling Tiles**



## **NIGEL B DESIGNS RANGE OF ATTACHMENT COMPONENTS FOR ANY SECURITY CAMERA INSTALLATION**

This Flexibility allows an Installer to choose which Component is right for the job and makes the installation of different types of Cameras that much easier



**Unistrut® Bracket attached to Unistrut®**



**Camera Arm attached to a Vertical Unistrut® Channel**



**3 Cameras mounted Horizontally on Unistrut**



**Single Camera mounted Horizontally on Unistrut Channel**

**Using Unistrut Channel allows any Camera to be attached either Vertically or Horizontally**



**Unistrut shown with Mounting Bracket for (4) Cameras**



**Single Unistrut Bracket for (1) Camera**



**4 Position Unistrut Bracket**



**4 Camera Arms shown mounted on the 4 position Unistrut Bracket**

## **THE CORNER WALL MOUNTING BRACKET**

The Corner Wall Bracket allows up to three camera to be mounted on the corner of a Building



**Anti-Vibration Corner Wall Bracket**



**Illustration shows (3) Cameras attached to the Corner Wall Bracket**

The Corner Wall Bracket can be used allowing up to three Cameras to be attached to three sides of any corner surface. Particularly suitable for Mounting the Bosch MIC L Adaptor to the Corner of a Building or Wall to provide elimination of Vibration

See the next page for additional Mounting Attachments that are currently available

# INSTALLATION IDEAS USING THE I BEAM BRACKET

There are several different ways the I Beam/Girder Bracket can be used. Shown below are two examples



Unistrut to 1½" dia. Pole



Female to Female Coupler



Heavy Duty Seismic Adaptor



The I Beam/Girder Bracket is expandable from 4" - 8" wide



# DESKTOP LOCKING CABINET

Fitted with 2U RACK SPACE Rack Rails  
(Rack Rails are removable if not required)

WHEN SECURITY IS AN ISSUE THE LOCKING CABINET CAN BE INSTALLED ABOVE THE CEILING TILES WITH ALL OF THE EQUIPMENT SAFELY INSIDE



The Equipment can be Controlled from below via the Network or from a Cell Phone



Pole Mounted with the Equipment Installed above the Ceiling Tiles shown with a Pole Mounted Dome Camera attached below



Internal Power Supply

Generous Internal Space  
Cabinet 20" wide x 14" deep, 4 3/4" high.  
19" wide between the Rack Rails

Locking Door

2U Rack Space Rack Rails



Pole Mounted with the Equipment Installed above the Ceiling Tiles with the NB-MB Pole Mounted Monitor attached below

Cover shown removed for easy access to the DVR Recorder After Installing the Equipment, the Cover is Securely Fastened to the Base using 8 Tamper Proof Screws supplied



Front Door shown open prior to the Installation of the Equipment

The Lockable Desktop Cabinet is fitted with (2) 2RU Rack Rails that can be removed if not required, With most units taking up 1RU Rack Space there is enough Space for an (additional)

Made of Military Grade Aluminum these Locking Cabinets with their Internal dimensions provide enough room for two 2RU Rack space Equipment or Recorders regardless of the Manufacturer

Dimensions: Exterior 20"W x 14"L x 4.75"H Weight: 10 lbs  
Desktop Locking Cabinet: Part # NB-DLC

**POLE MOUNT SINGLE OR DUAL MOUNTING MONITOR BRACKETS WITH THE CONVENIENCE OF BEING ABLE TO MOUNT MONITORS ANYWHERE IN A ROOM**

**WHEN MOUNTING ON A WALL IS NOT AN OPTION**

**ALMOST UNLIMITED INSTALLATION OPTIONS**

Both the Single or Dual Monitor Pole Mount Bracket are designed to work with any 1½" dia Threaded Pole (Customer Supplied).

With the Introduction of our Reducers these can be fitted to the Single or Dual Monitor Bracket allowing either 1" or 1¼" Pole to be substituted for the Standard 1½".

Unistrut Channel can be attached to the Ceiling Plate



Positive Lock Controls the Vertical Angle of the Monitor

**WORKING WITH UNISTRUT**

A Single and Dual Monitor Bracket can be used using Unistrut Channel

**USING OUR PLENUM RATED PLENUM EQUIPMENT BOXES**

Includes working with all our Plenum Rated Equipment Boxes (see Plenum Box Leaflet).



1"- 1½" Pole Reducer

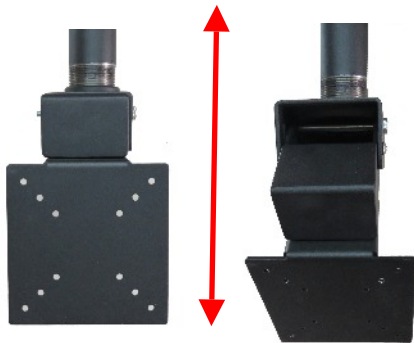


1¼"- 1½" Pole Reducer

Pole Reducers allow using different diameters of Pole



Available in either Black or White



Vertical Angle Adjustment



Dual Monitor Bracket shown in White



Dual Monitor Bracket shown in Black

**ALL CABLES RUN INSIDE THE POLE**  
*So Cables never need to show*



Horizontal Angle Adjustment



Monitors Installed "Back to Back" Using the Dual Monitor Bracket



50" Flat Screen TV mounted on a Pole

# PRICE LIST OCTOBER 2017

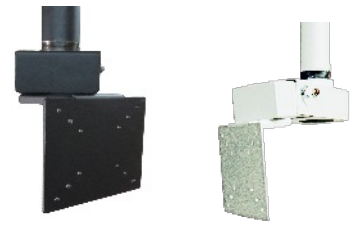
We reserve the right to change our product's prices and designs without prior notice.



Anti-Vibration Camera Arm  
Part # NB-CAAV \$279.95



Adjustable Width 3" - 8"  
Anti-Vibration I Beam/Girder Bracket  
Part # NB-EXP81B \$399.95



Pole Mounting Monitor Bracket Black  
Part # NB-MB \$239.95  
Pole Mounting Monitor Bracket White  
Part # NB-MB-W \$239.95



Anti-Vibration Corner Wall Bracket  
Part # NB-CNRWB \$239.95



Unistrut to male Pole Converter  
Part # NB-TSA \$109.95



End of Unistrut to Female Pole Converter  
Part # NB-EUFPC \$109.95



Mounted Unistrut to Female Pole Converter  
Part # NB-UMFPC \$119.95



VESA Extension Plate Extenders Set of two 200-400 mm (Black Only)  
Part # NB-EXV \$49.95



Heavy Duty Anti-Vibration (Seismic) Adaptor  
Part # NB-HDSA \$579.95



1" - 1 1/2" Pole Reducer  
Part # NB-R1 1X1 \$19.95



1/4" - 1 1/2" Pole Reducer  
Part # NB-R2 1X2 \$19.95



1/2" dia. Female-Female 2" Long Coupler  
Part # NB-2064 \$59.95



Dual Mounting Pole Monitor Bracket Black  
Part # NB-DMB \$479.95  
Dual Mounting Pole Monitor Bracket White  
Part # NB-DMB-W \$479.95



Anti-Vibration (Seismic) Mounting Box with an Anti-Vibration Back Plate, allowing attachment to a 1 1/2" Pole, Unistrut or any Flat Surface  
Part # NB-AVMB-W \$299.95



Anti-Vibration Back Mounting Plate. Can be attached to a Mounting Box for vertical or Horizontal Mounting Positions



Dual Monitor Black Converter Bracket  
Part # NB-400 \$199.95  
Dual Monitor White Converter Bracket  
Part # NB-400-W \$199.95



Anti-Vibration Adaptor for the Bosch Series MIC Camera  
Part # NB-AVMIC \$799.95  
Part # NB-AVMIC-W \$799.95



Anti-Vibration Adaptor for the Bosch Autodome 4000 or FLIR FC Series Cameras  
Part # NB-BAFAV-W \$599.95



(2) Pole Mount Brackets for all Mounting Boxes  
Part # NB-PBKB-W \$69.95



Single Unistrut Bracket  
Part # NB-STB \$125.95



4 Position Unistrut Bracket  
Part # NB-4STB \$179.95



Anti-Vibration L Adaptor for the Bosch Series MIC Camera  
Part # NB-AVMICL \$999.95  
Part # NB-AVMICL-W \$999.95



Anti-Vibration Rear Cover Assembly, for use with the Autodome Arm and 700 Camera  
Part # NB-RCAAV-W \$699.95



Desktop Locking Cabinet Fitted with (2) Racks Lock & (2) keys  
Part # NB-DLC \$499.95